



Salamanca Intermodal Logistic Platform

The first public inland terminal specialised in agri-bulk in Western Iberia



www.zaldesa.com

Salamanca Intermodal-Logistic Platform ZALDESA

AGRO-ALIMENTARY AREA
AND COLD LOGISTIC

TRUCK CENTER

CUSTOMS

LOGISTIC AREA PHASE 1

MULTIPURPOSE
AREA

LOGISTIC AREA PHASE 2

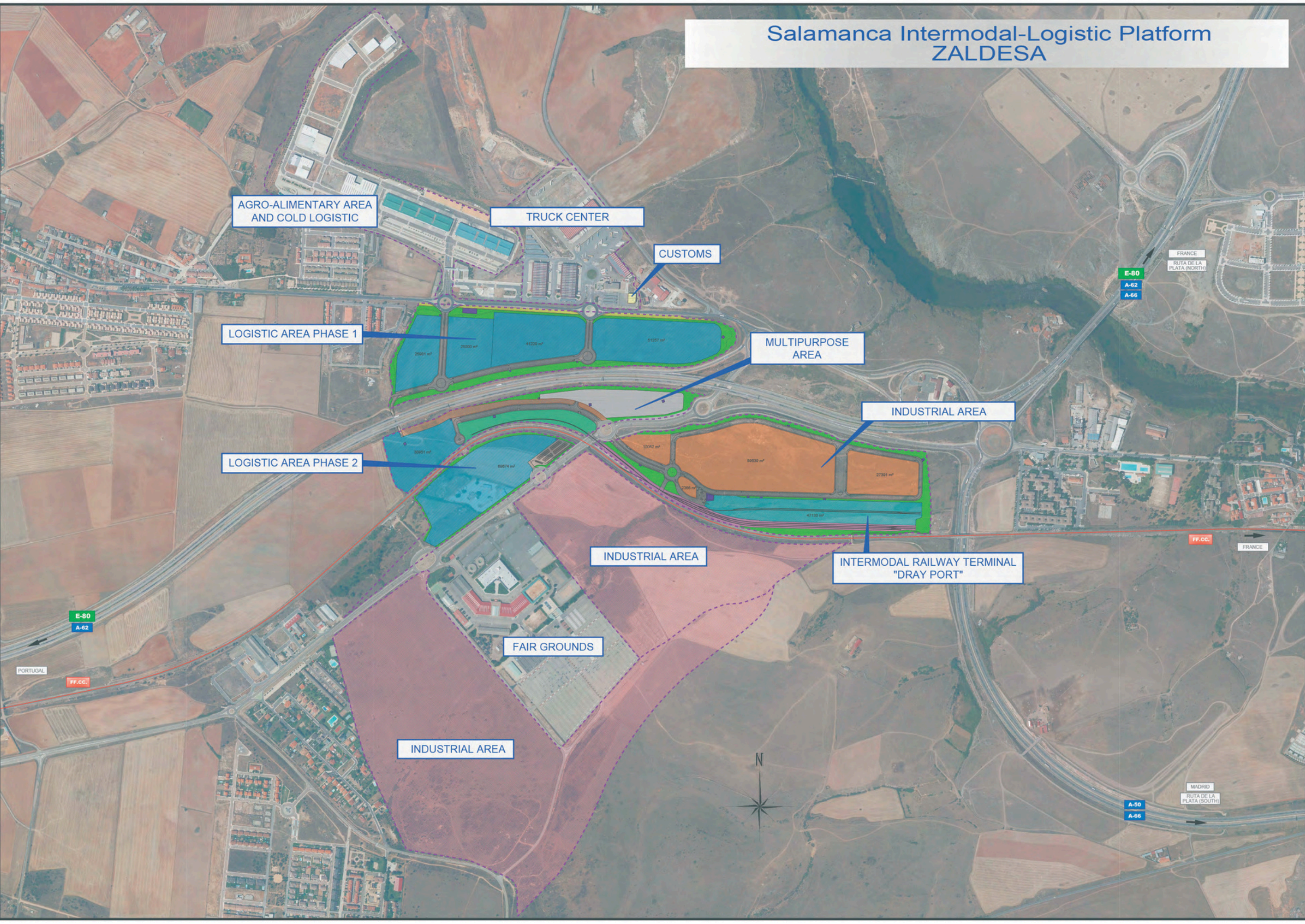
INDUSTRIAL AREA

INDUSTRIAL AREA

INTERMODAL RAILWAY TERMINAL
"DRAY PORT"

FAIR GROUNDS

INDUSTRIAL AREA



FRANCE
RUTA DE LA PLATA (NORTH)
E-80
A-62
A-66

E-80
A-62

PORTUGAL

FF.CC.

FF.CC.

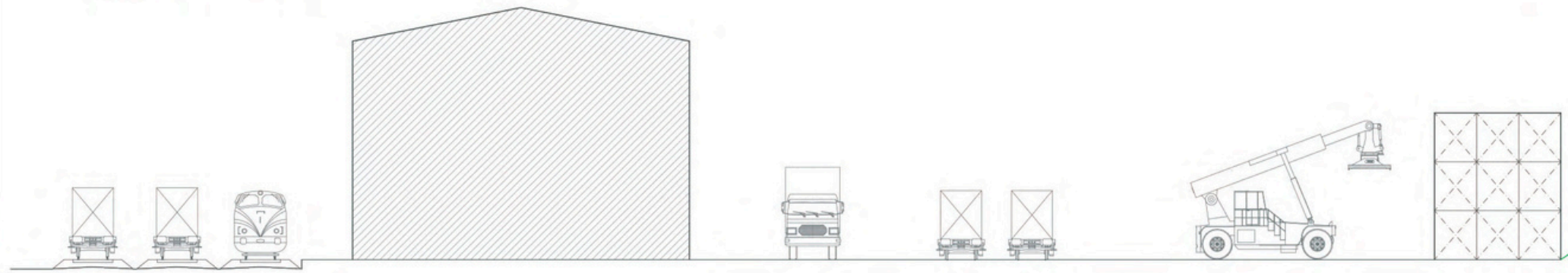
FRANCE

MADRID
RUTA DE LA PLATA (SOUTH)
A-50
A-66



LENGTHS

1. ELECTRIFIED RECEPTION/EXPEDITION	802 m.
2. ELECTRIFIED RECEPTION/EXPEDITION	844 m.
3. HANDLING BULKS	771 m.
4. HANDLING SIDINGS	747 m.
5. HANDLING SIDINGS	623 m.
6. HEAD-SHUNT AND REFUGE SIDING	672 m.



SECTION



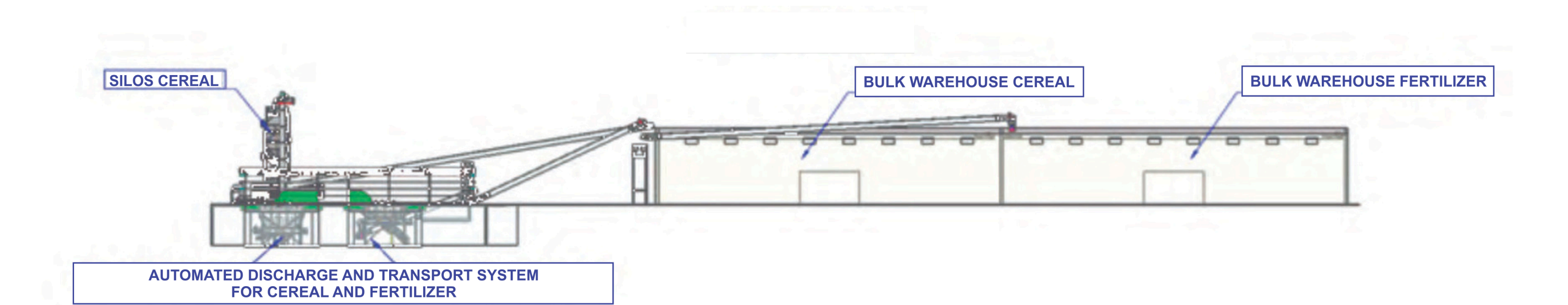


SILOS CEREAL

BULK WAREHOUSE CEREAL

BULK WAREHOUSE FERTILIZER

AUTOMATED DISCHARGE AND TRANSPORT SYSTEM FOR CEREAL AND FERTILIZER

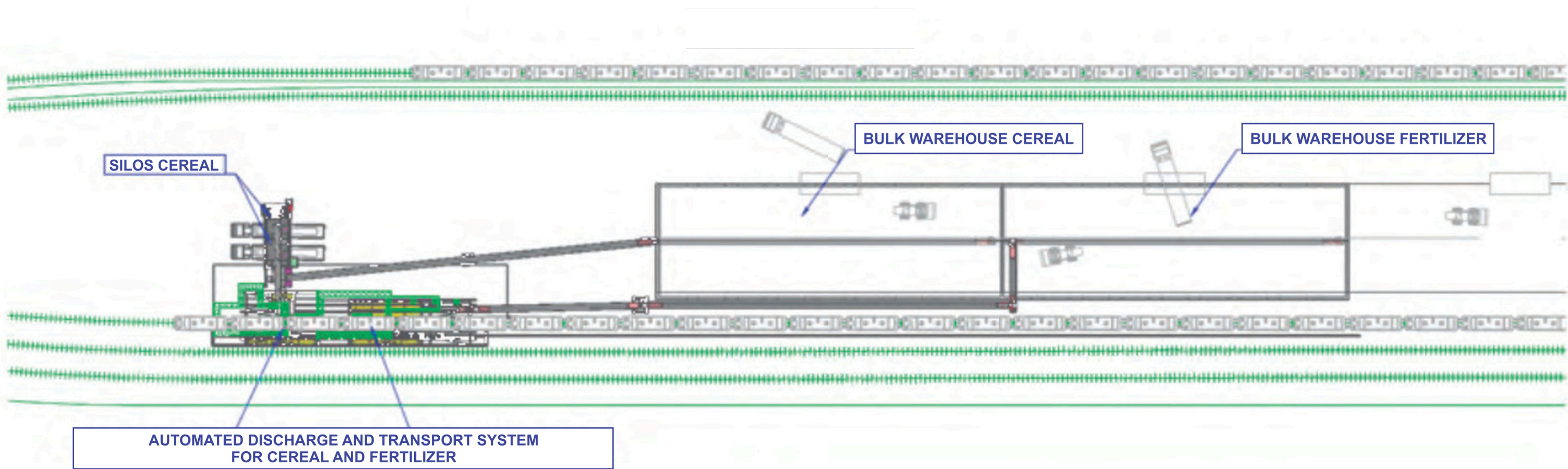


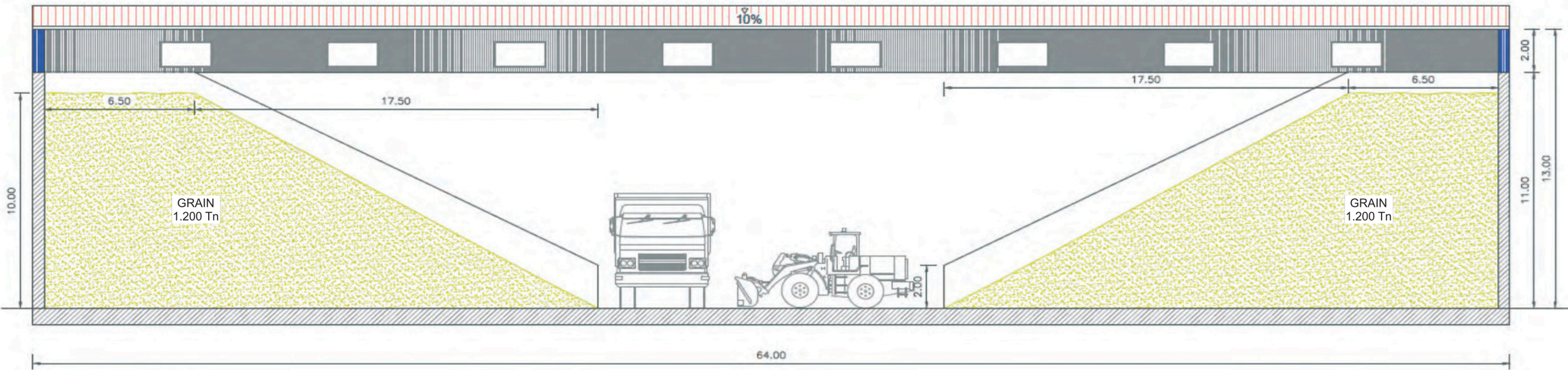
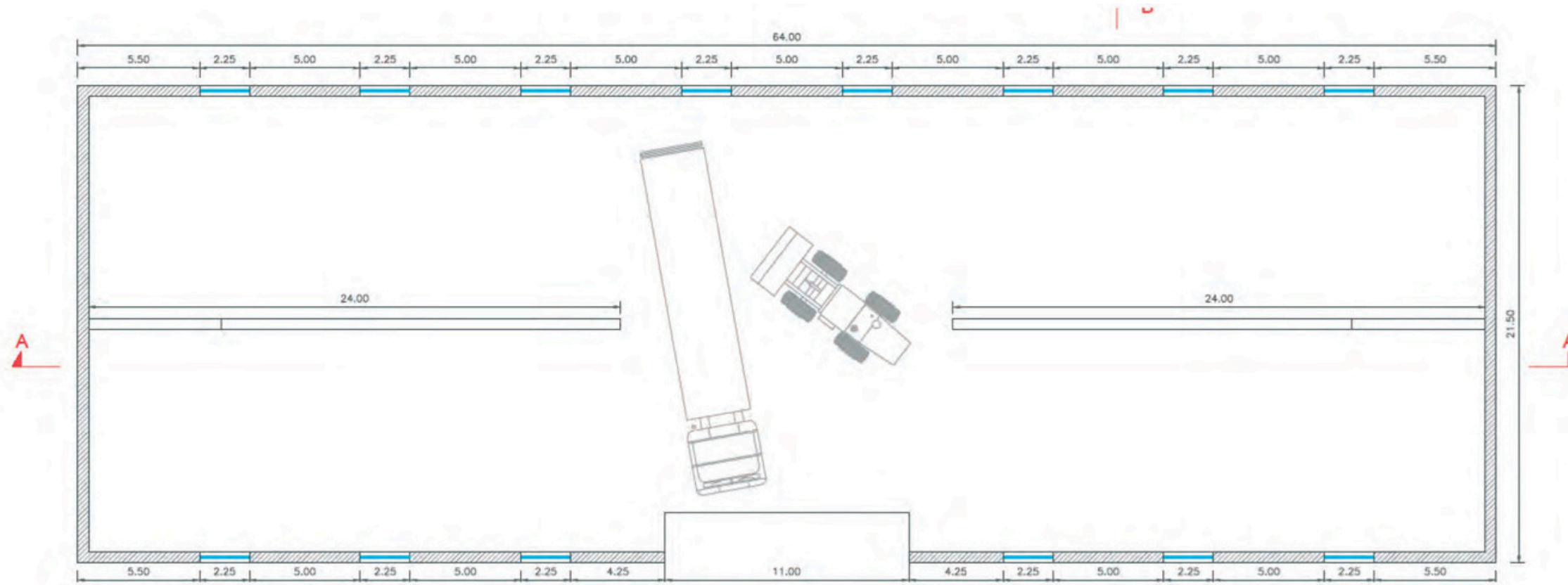
SILOS CEREAL

BULK WAREHOUSE CEREAL

BULK WAREHOUSE FERTILIZER

AUTOMATED DISCHARGE AND TRANSPORT SYSTEM FOR CEREAL AND FERTILIZER





SECCIÓN A-A
ESCALA 1:200

